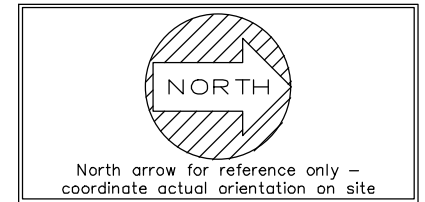
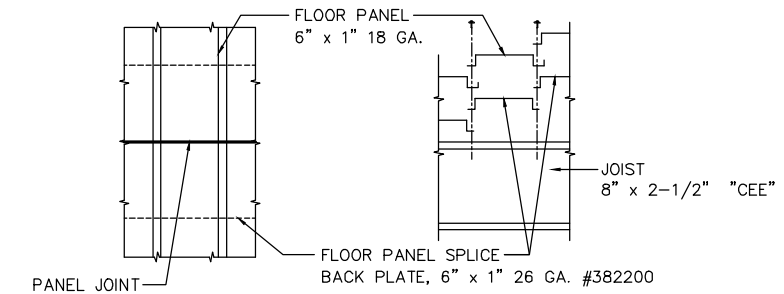


**NOTE: ALL SHUTTERS IN TOWER SWING IN, UNLESS OTHERWISE SHOWN  
ALL DOORS ARE SET AT FINISHED FLOOR UNLESS OTHERWISE SHOWN**



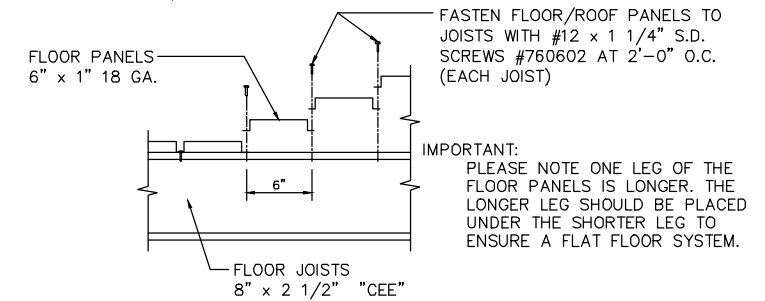
**DESIGN LOADS:**

ROOF LIVE LOAD: 100 PSF  
 FLOOR LIVE LOAD: 100 PSF  
 WIND LOAD: 131 MPH  
 SEISMIC DESIGN CAT: LOCAL  
 SITE CLASS: LOCAL  
 DESIGN CODE: LOCAL & NFPA 1402



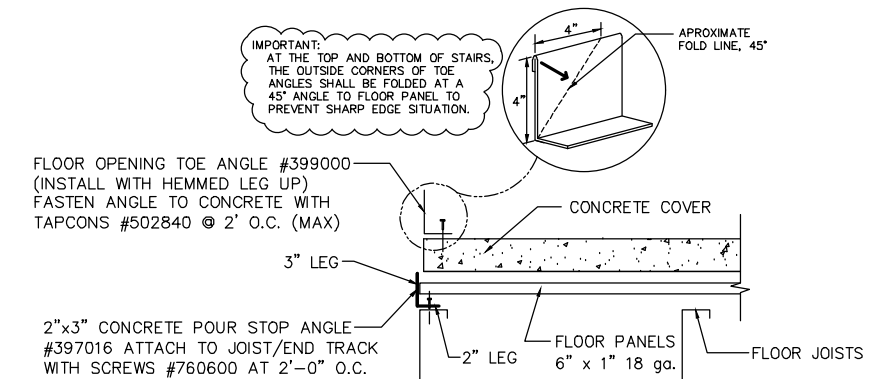
**FLOOR PANEL SPLICE PLATE**

scale: 1 1/2" = 1'-0"



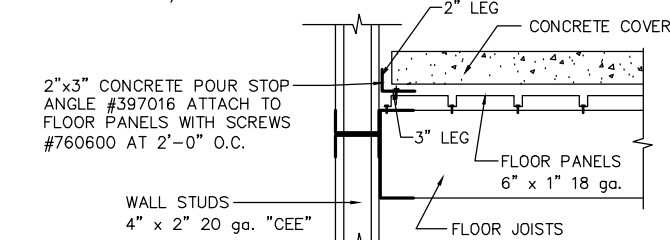
**TYPICAL FLOOR PANEL FASTENING DETAIL**

scale: 1 1/2" = 1'-0"



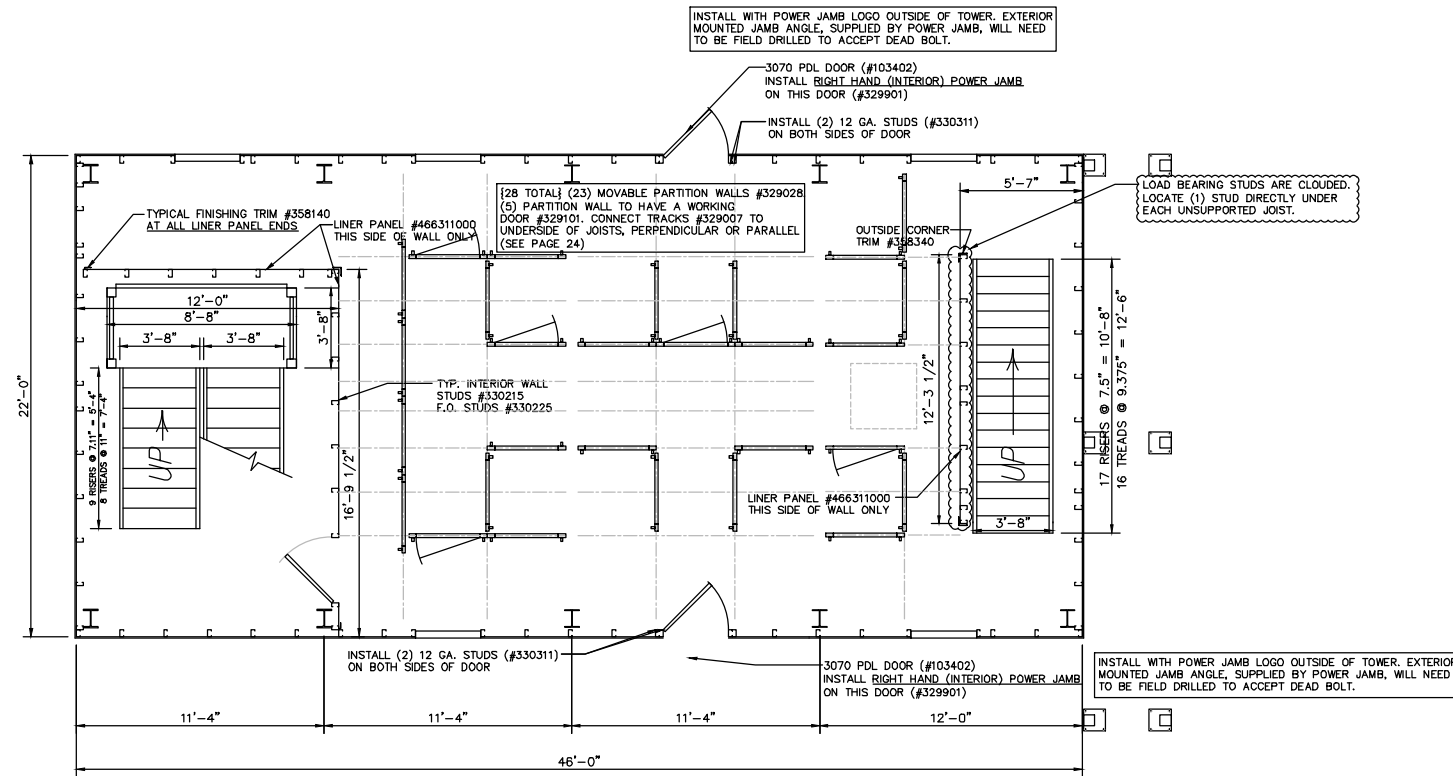
**TYPICAL FLOOR OPENING TRIM DETAIL**

scale: 1 1/2" = 1'-0"



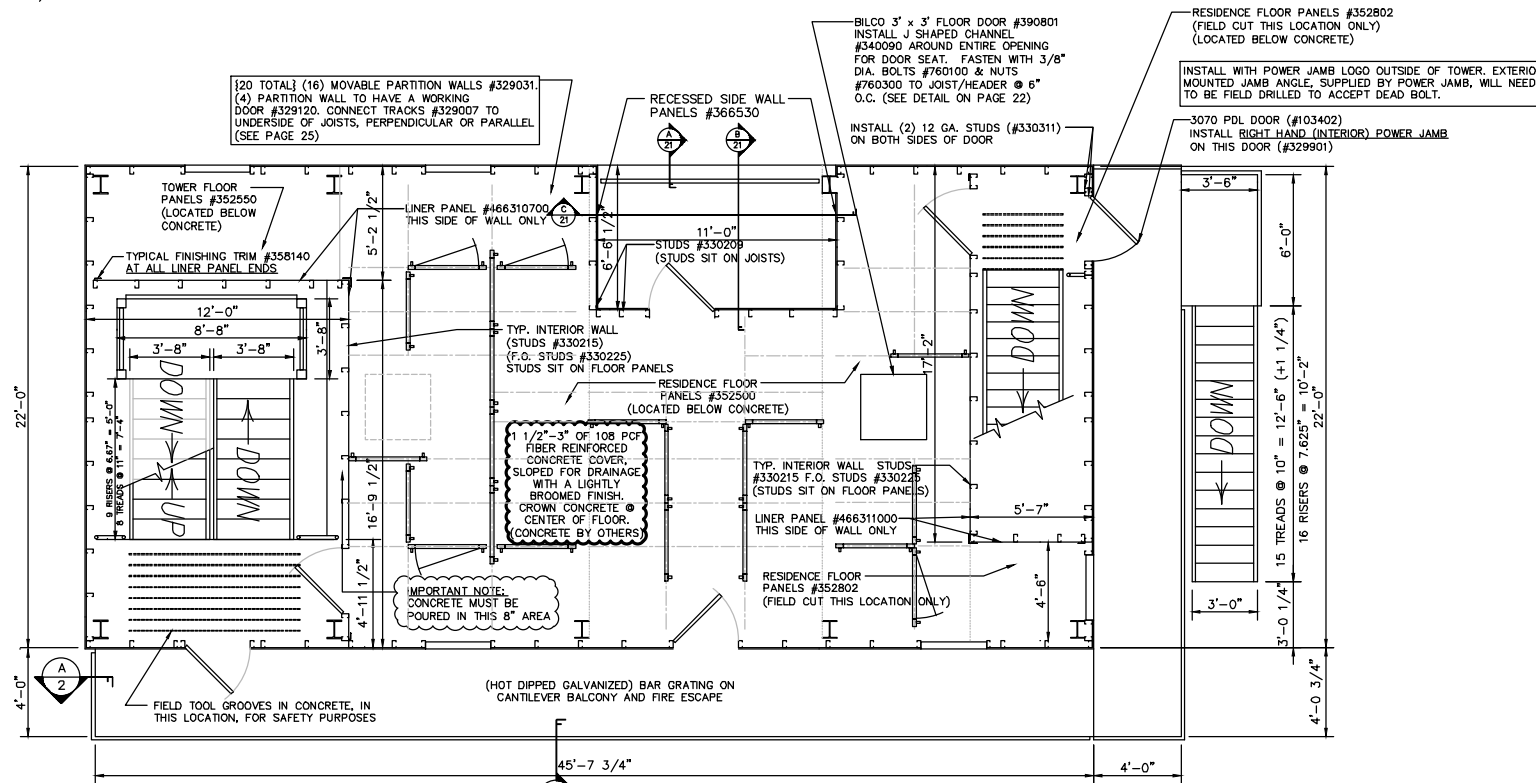
**TYPICAL FLOOR EDGE TRIM DETAIL**

scale: 1 1/2" = 1'-0"



**FIRST FLOOR PLAN**

SCALE: 1/4" = 1'-0"



**SECOND FLOOR PLAN**

SCALE: 1/4" = 1'-0"

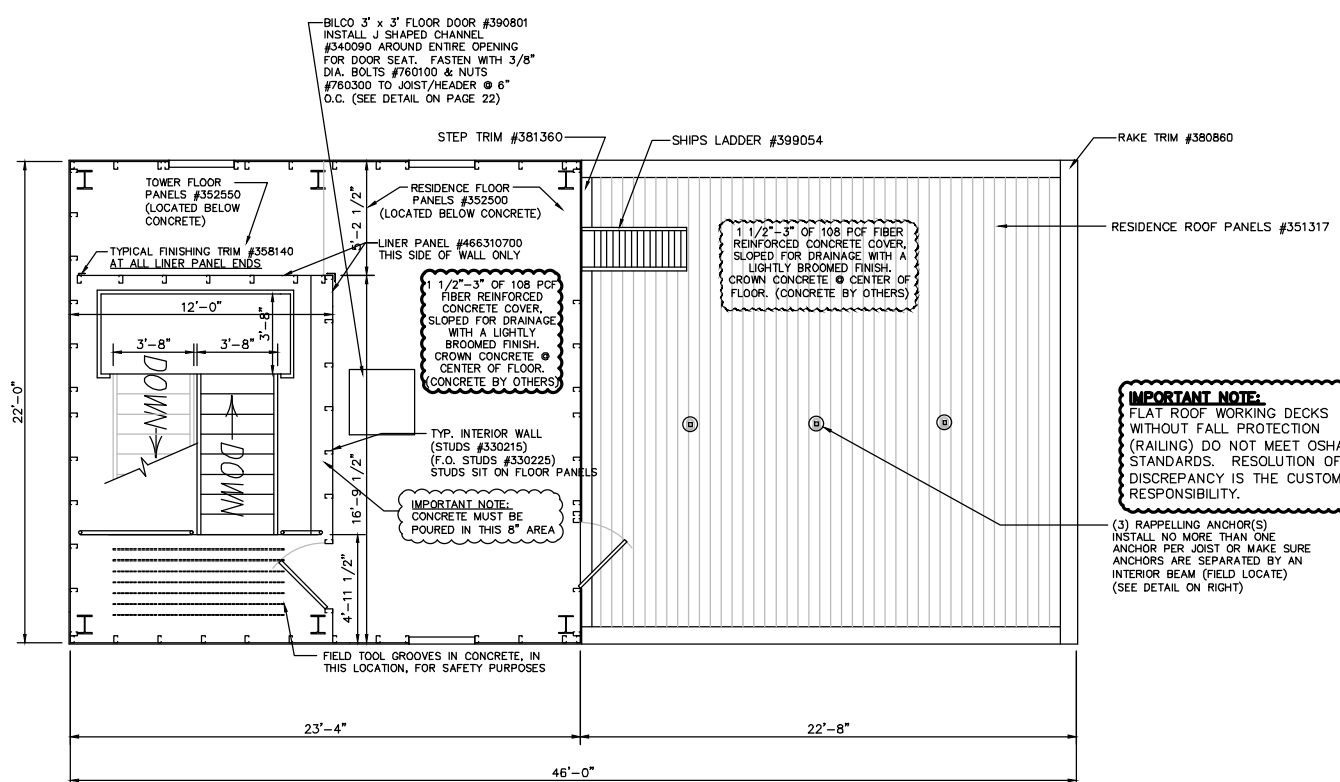
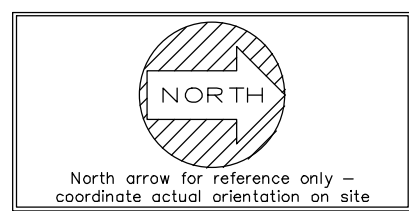
REVISIONS	by
1. REVISED: 06-08-17	DWK

THIS DRAWING AND ALL PARTS THEREOF IS THE EXCLUSIVE PROPERTY OF TACTICAL TRAINING SYSTEMS  
 314 WILBURN ROAD, SUN PRAIRIE, WI 53590  
 OFFICE: (608) 327-4100 FAX (608) 834-1843  
 AND MAY NOT BE REPRODUCED IN WHOLE OR PART WITH OUT WRITTEN PERMISSION.

**TACTICAL TRAINING SYSTEMS**  
 - A DIVISION OF FIRE FACILITIES, INC.  
 314 WILBURN ROAD, SUN PRAIRIE, WI 53590  
 OFFICE: (608) 327-4100 FAX (608) 834-1843  
 TOLL FREE (800) 929-3726 TOLL FREE FAX (866) 639-7012

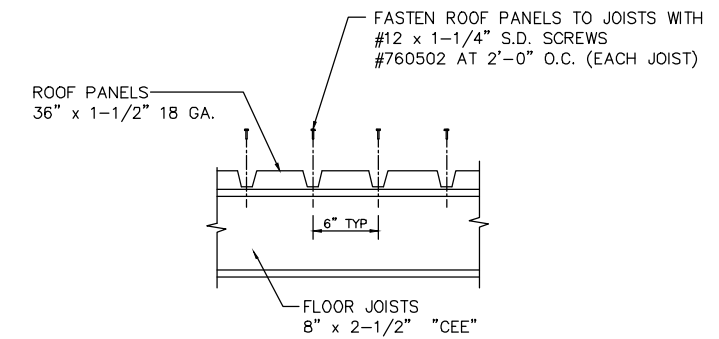
**WESCO MODEL HC-1**  
 CUSTOM TAMPA, FL  
 Job Description: FLOOR PLANS  
 Date: APRIL 19, 2017  
 Drawn by: DWK  
 Checked by: SPW  
 Scale: SHOWN  
 Order No. #4958  
 Sheet No.

REVISIONS	by
1. REVISED: 06-08-17	DWK



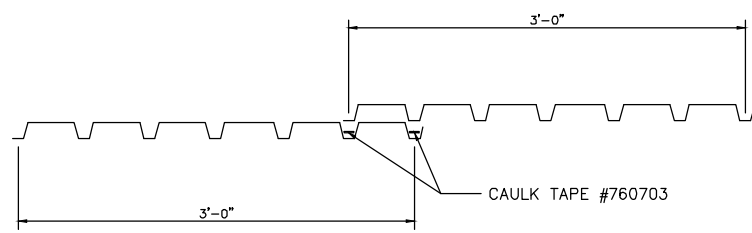
**THIRD FLOOR / RESIDENCE ROOF PLAN**

SCALE: 1/4" = 1'-0"



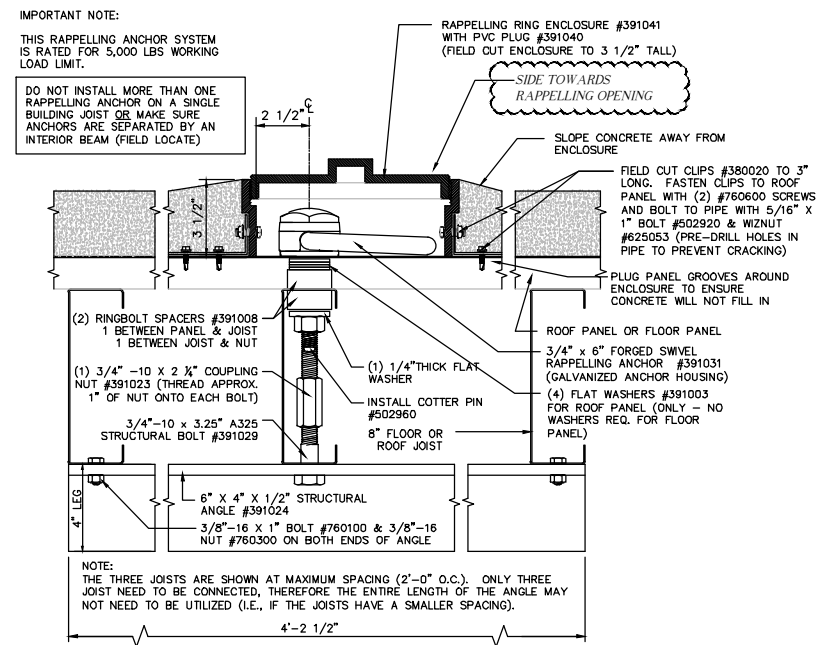
**TYPICAL ROOF PANEL FASTENING DETAIL**

scale: 1 1/2" = 1'-0"



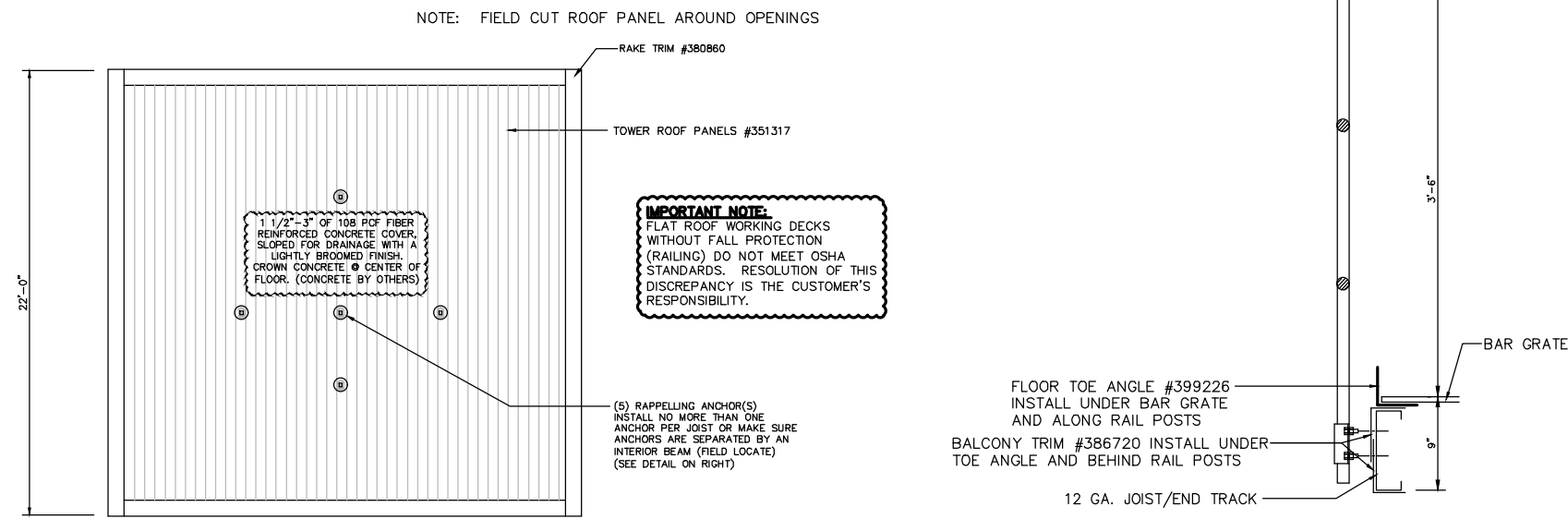
**TYPICAL ROOF PANEL OVERLAP**

scale: 1 1/2" = 1'-0"



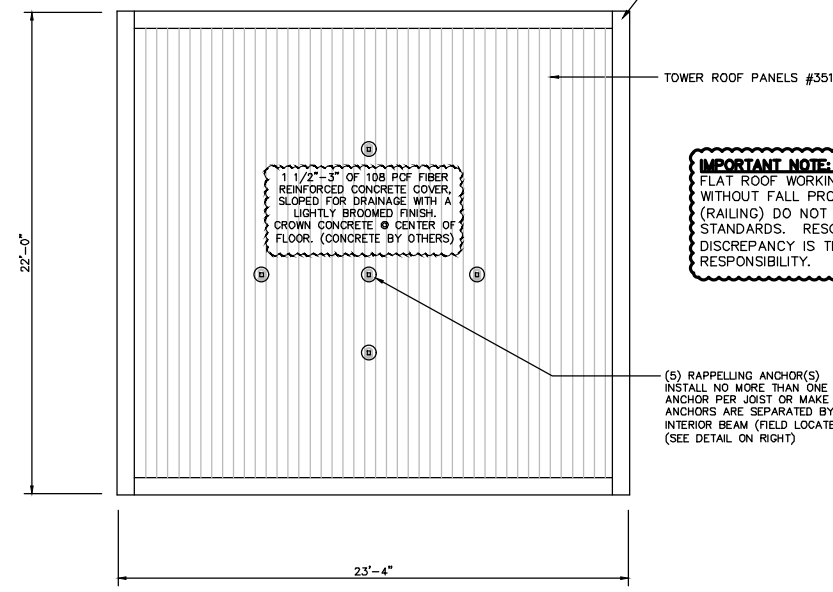
**RECESSED RAPPPELLING ANCHOR INSTALLATION DETAIL FOR CONCRETE**

scale: 3" = 1'-0"



**SECTION 'A' THRU CANT. BALCONY HANDRAIL**

NOTE: FIELD CUT ROOF PANEL AROUND OPENINGS



**TOWER ROOF PLAN**

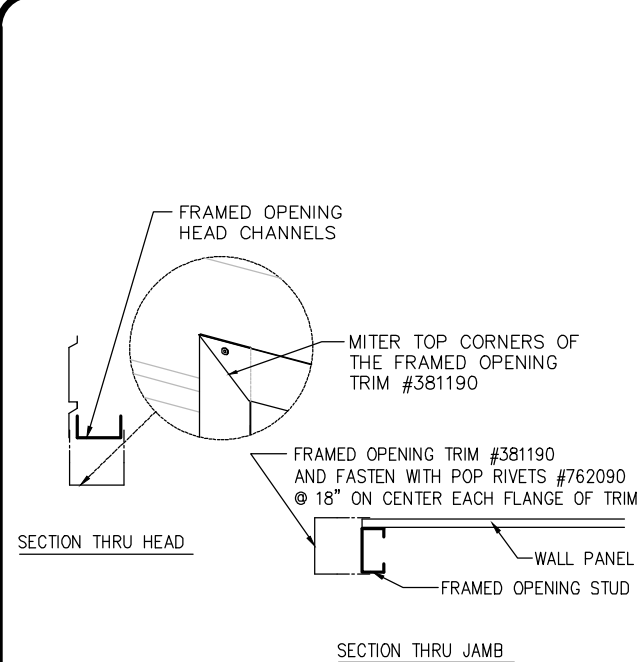
SCALE: 1/4" = 1'-0"

THIS DRAWING AND ALL PARTS THEREOF IS THE EXCLUSIVE PROPERTY OF TACTICAL TRAINING SYSTEMS  
 314 WILBURN ROAD, SUN PRAIRIE, WI 53590  
 OFFICE: (608) 327-4100 FAX (608) 834-1843  
 AND MAY NOT BE REPRODUCED IN WHOLE OR PART WITH OUT WRITTEN PERMISSION.

**TACTICAL TRAINING SYSTEMS**  
 A DIVISION OF FIRE FACILITIES, INC.  
 314 WILBURN ROAD, SUN PRAIRIE, WI 53590  
 OFFICE: (608) 327-4100 FAX (608) 834-1843  
 TOLL FREE (800) 929-3736 TOLL FREE FAX (866) 639-7012

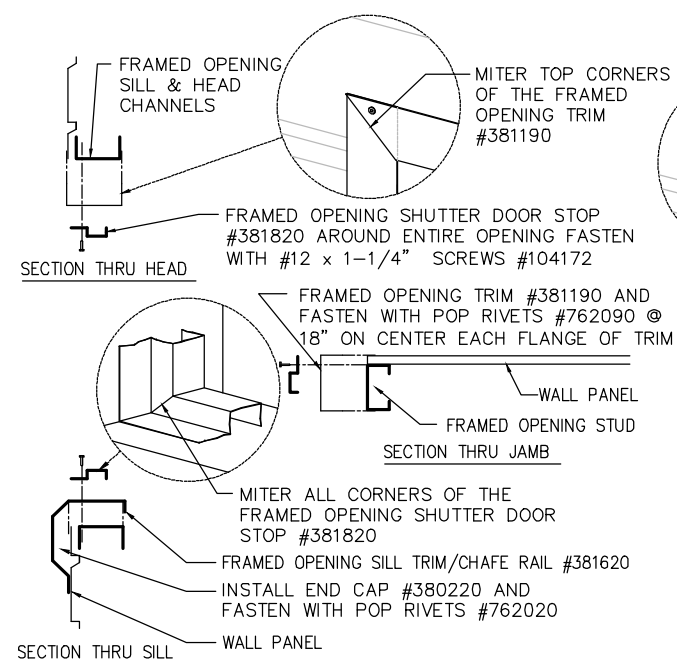
**WESCO MODEL HC-1**  
 CUSTOM TAMPA, FL  
 Job Description:  
 Date: APRIL 19, 2017  
 Drawn by: DWK  
 Checked by: SPW  
 Scale: SHOWN  
 Order No. #4958  
 Sheet Title: FLOOR PLANS  
 Sheet No.





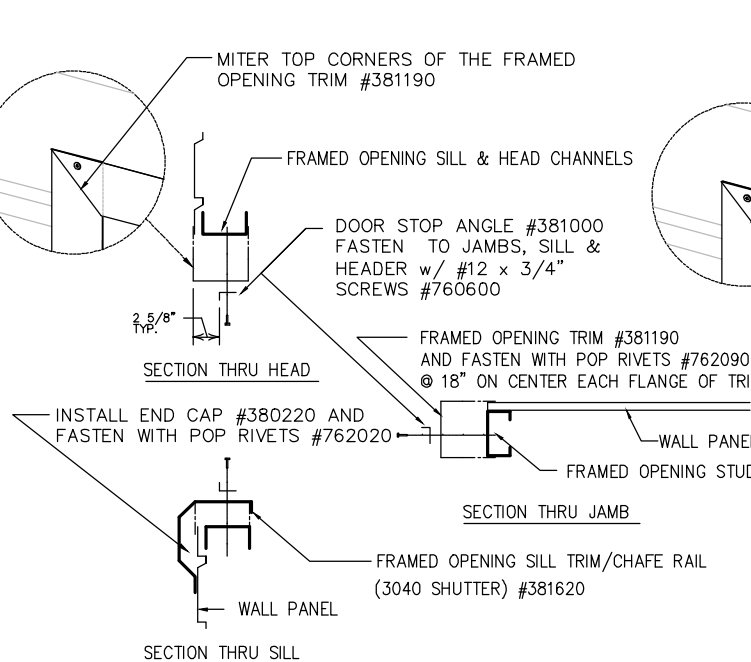
**TOWER SWING DOOR TRIM DETAILS**

scale: 1 1/2" = 1'-0"



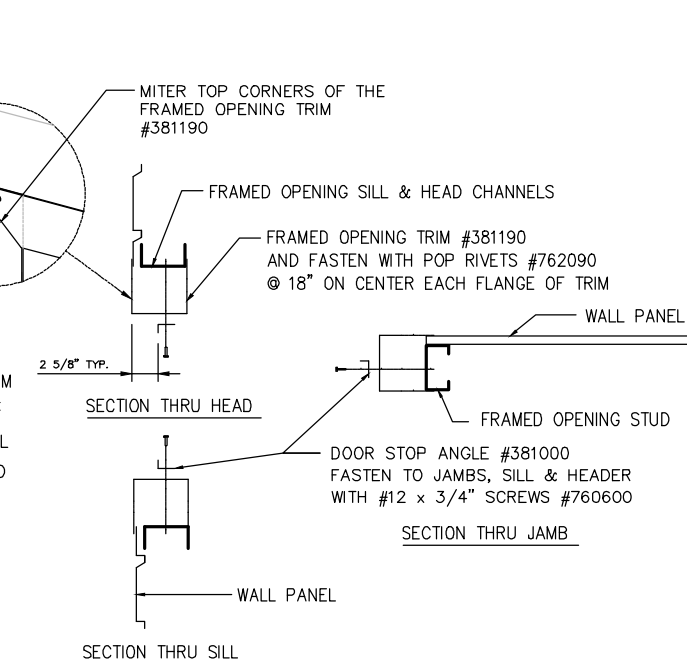
**NON-BURN SHUTTER TRIM DETAILS**

scale: 1 1/2" = 1'-0"



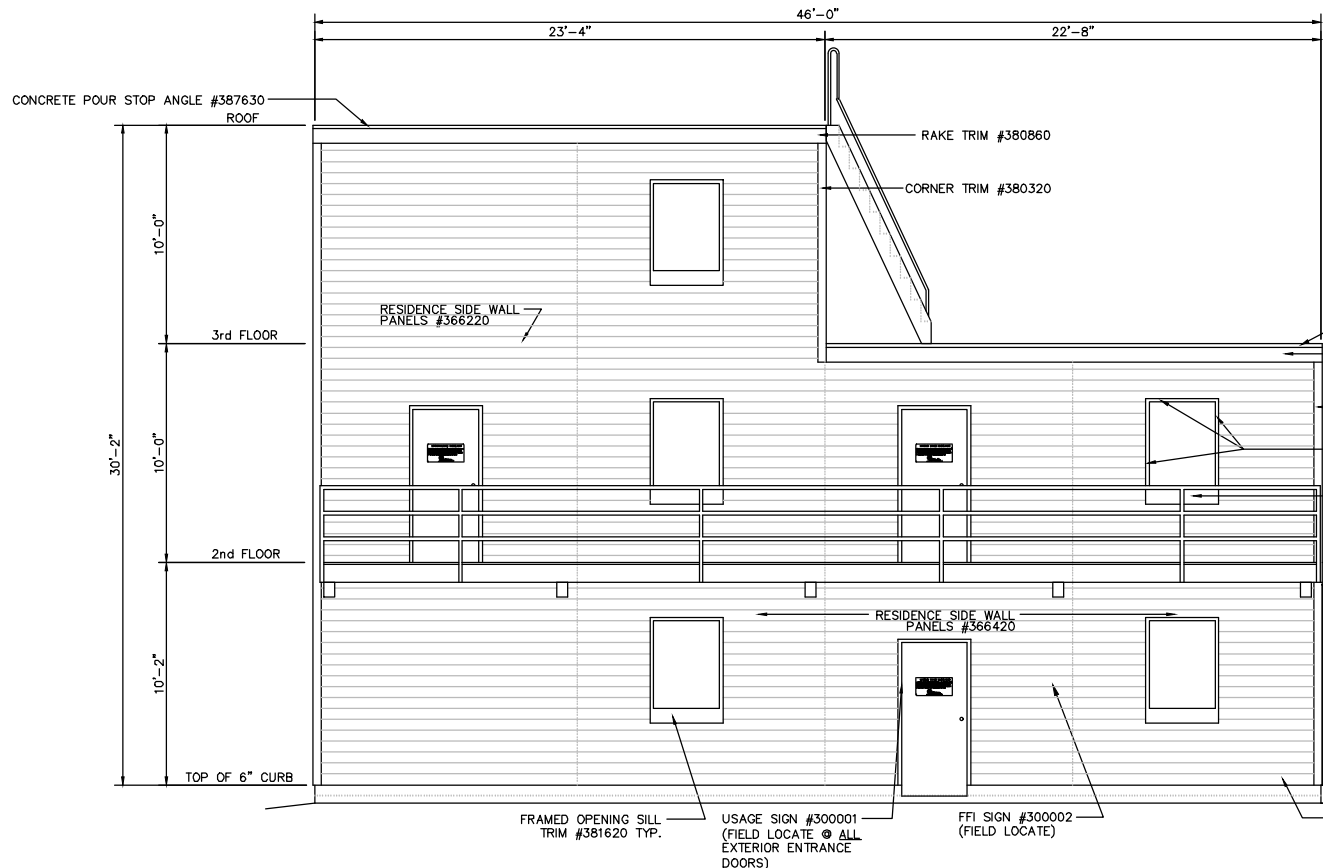
**BURN ROOM SHUTTER TRIM DETAILS**

scale: 1 1/2" = 1'-0"



**BURN SWING DOOR TRIM DETAILS**

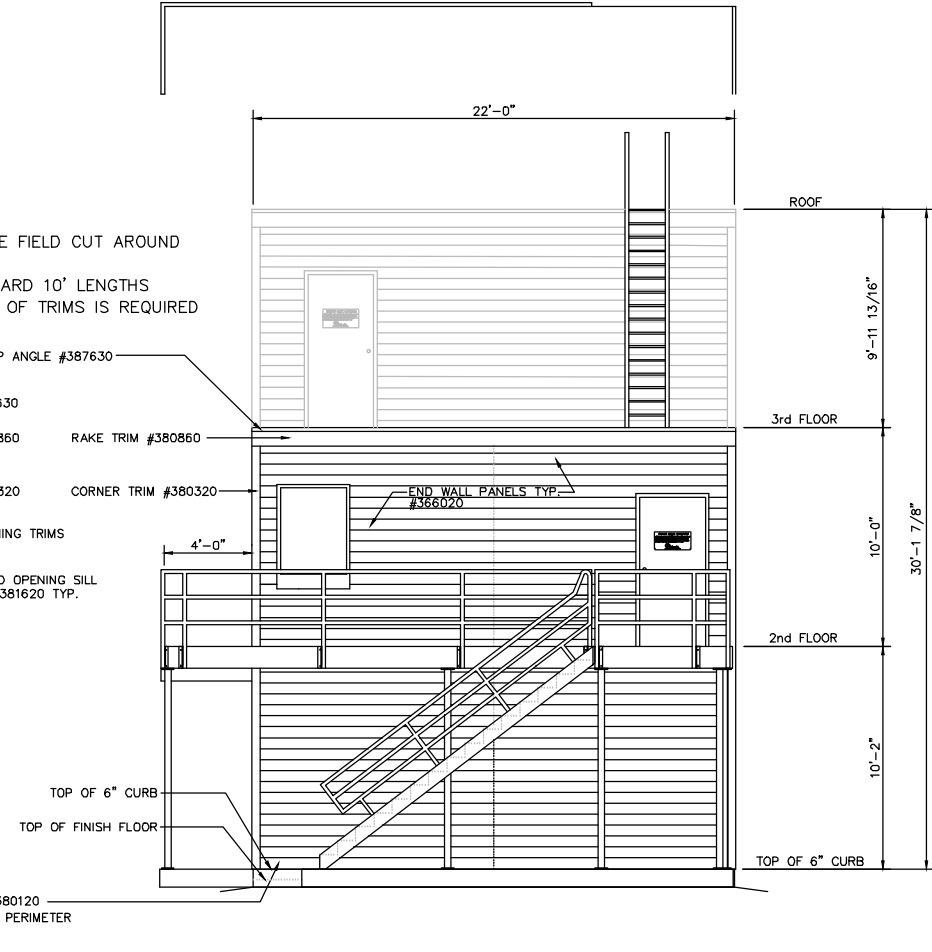
scale: 1 1/2" = 1'-0"



**EAST SIDE ELEVATION**

SCALE: 1/4" = 1'-0"

- NOTES:
1. WALL PANEL MUST BE FIELD CUT AROUND FRAMED OPENINGS
  2. TRIMS ARE IN STANDARD 10' LENGTHS SOME FIELD CUTTING OF TRIMS IS REQUIRED



**NORTH END ELEVATION**

SCALE: 1/4" = 1'-0"

REVISIONS	by
1. REVISED: 06-08-17	DWK

THIS DRAWING AND ALL PARTS THEREOF IS THE EXCLUSIVE PROPERTY OF TACTICAL TRAINING SYSTEMS  
 314 WILBURN ROAD, SUN PRAIRIE, WI 53590  
 OFFICE: (608) 327-4100 FAX (608) 834-1843  
 AND MAY NOT BE REPRODUCED IN WHOLE OR PART WITH OUT WRITTEN PERMISSION.

**TACTICAL TRAINING SYSTEMS**  
 - A DIVISION OF FIRE FACILITIES, INC.  
 314 WILBURN ROAD, SUN PRAIRIE, WI 53590  
 OFFICE: (608) 327-4100 FAX (608) 834-1843  
 TOLL FREE (800) 929-3726 TOLL FREE FAX (866) 639-7012

Job Description: **WESCO MODEL HC-1 CUSTOM TAMPA, FL**

Sheet Title: **ELEVATIONS**

Date:	APRIL 19, 2017
Drawn by:	DWK
Checked by:	SPW
Scale:	SHOWN
Order No.	#4958
Sheet No.	04 of 04