

CONSTRUCTION PLANS for HILLSBOROUGH COUNTY SHERIFF'S OFFICE TRAINING FACILITY DRIVING PAD RE-SURFACING PLAN

JUNE 24, 2015

Prepared By

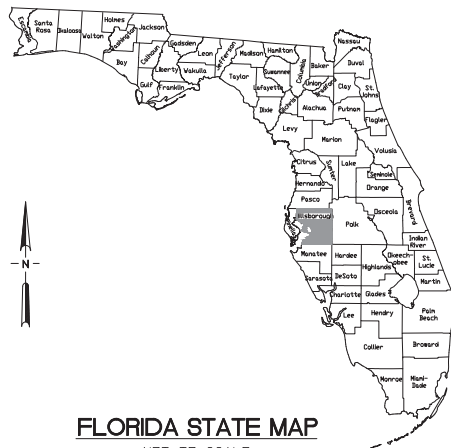
**JBM & R
ENGINEERING, INC.**

P.O. BOX 1566 VALRICO, FL 33595
TEL: 813.598.4643 (CELL) 813.741.2109 (OFFICE) 813.655.0061 (FAX)
C.A.N. # 7457

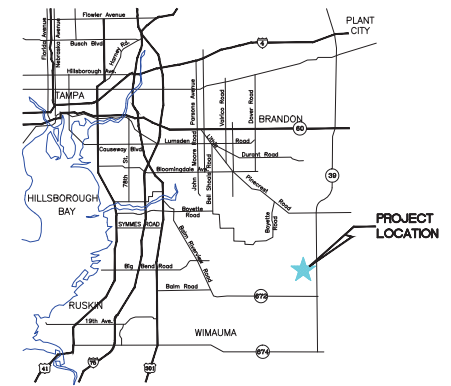
Ralph Remmert, P.E.
Florida Registration No. 39610

DRAWING INDEX

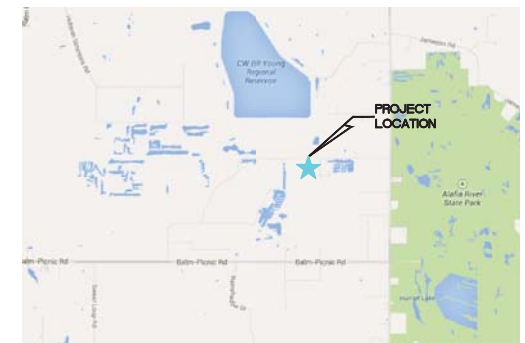
DWG. NO.	TITLE
C-1	COVER SHEET
C-2	OVERALL SITE PLAN
C-3	RE-SURFACING PLAN



FLORIDA STATE MAP
NOT TO SCALE



SITE VICINITY MAP
NOT TO SCALE



SITE LOCATION MAP
NOT TO SCALE

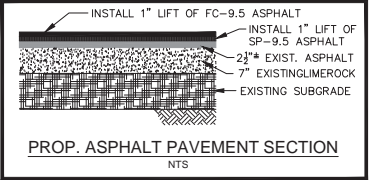
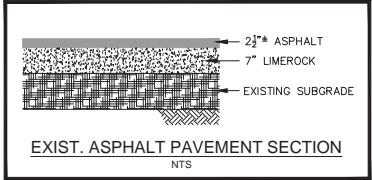


NO.	DATE	REVISION	BY	CHK	APP
2	06/23/15	Revised Repair Extents	JK	BRH	RR
1	06/16/15	Issued for Bid	JK	BRH	RR
0	05/07/15	Issued for Review	JK	RR	

HILLSBOROUGH COUNTY SHERIFF'S OFFICE DRIVING PAD RE-SURFACING OVERALL SITE PLAN	
P.O. BOX 1566 VAHOO, FL 32955 TEL: 813.598.4643 (C) 813.741.2109 (O) 813.655.0061 (FAX)	SHEET NO: 2 DISCIPLINE: CML PROJECT:

JBM & R
ENGINEERING, INC.
 Ralph E. Remmert, P.E.
 P.E. #39610
 C.A.N. #7457

REFERENCE DRAWINGS: IND. DATE
 THIS DRAWING IS THE PROPERTY OF JBM & R ENGINEERING, INC. AND IS LOANED TO YOU BY THE ENGINEER. IT IS NOT TO BE REPRODUCED, COPIED, OR TRANSMITTED IN ANY FORM OR BY ANY MEANS, ELECTRONIC OR MECHANICAL, INCLUDING PHOTOCOPYING, RECORDING, OR BY ANY INFORMATION STORAGE AND RETRIEVAL SYSTEM, WITHOUT THE WRITTEN PERMISSION OF JBM & R ENGINEERING, INC.



BENCHMARK INFORMATION:
ELEVATIONS SHOWN HEREON ARE BASED ON HILLSBOROUGH COUNTY BENCHMARKS VC-226 WITH A REPORTED ELEVATION OF 106.59 FEET (NAVD 1988), AND VC-227 WITH A REPORTED ELEVATION OF 97.81 FEET (NAVD 1988) AND VR-B WITH A REPORTED ELEVATION OF 102.12 FEET (NAVD 1988) AND PC-A WITH A REPORTED ELEVATION OF 106.17 FEET (NAVD 1988).

VERTICAL DATUM CONVERSION NOTE:
THE VERTICAL DATUM UTILIZED FOR THIS PROJECT IS NAVD 1988, US SURVEY FEET. NAVD 1988 + 0.96 FEET = 1929. CONVERSION DONE WITH VERTCON PROGRAM. CONTRACTOR TO VERIFY.

** LBR AND BORE LOCATIONS ARE APPROXIMATE AND HAVE BEEN PROVIDED BY FLORIDA GEOTECHNICAL ENGINEERING, INC.

SITE DATA
FOLIO #: 088548.5000
SEC/TWP/RGE: 13/31/21
TOTAL LAND AREA: 320 ACRES
PROJECT AREA: 6.4 ACRES
FLOOD ZONES: "X" Panel No. 12057C0545H
EXISTING ZONING: AR

LEGEND

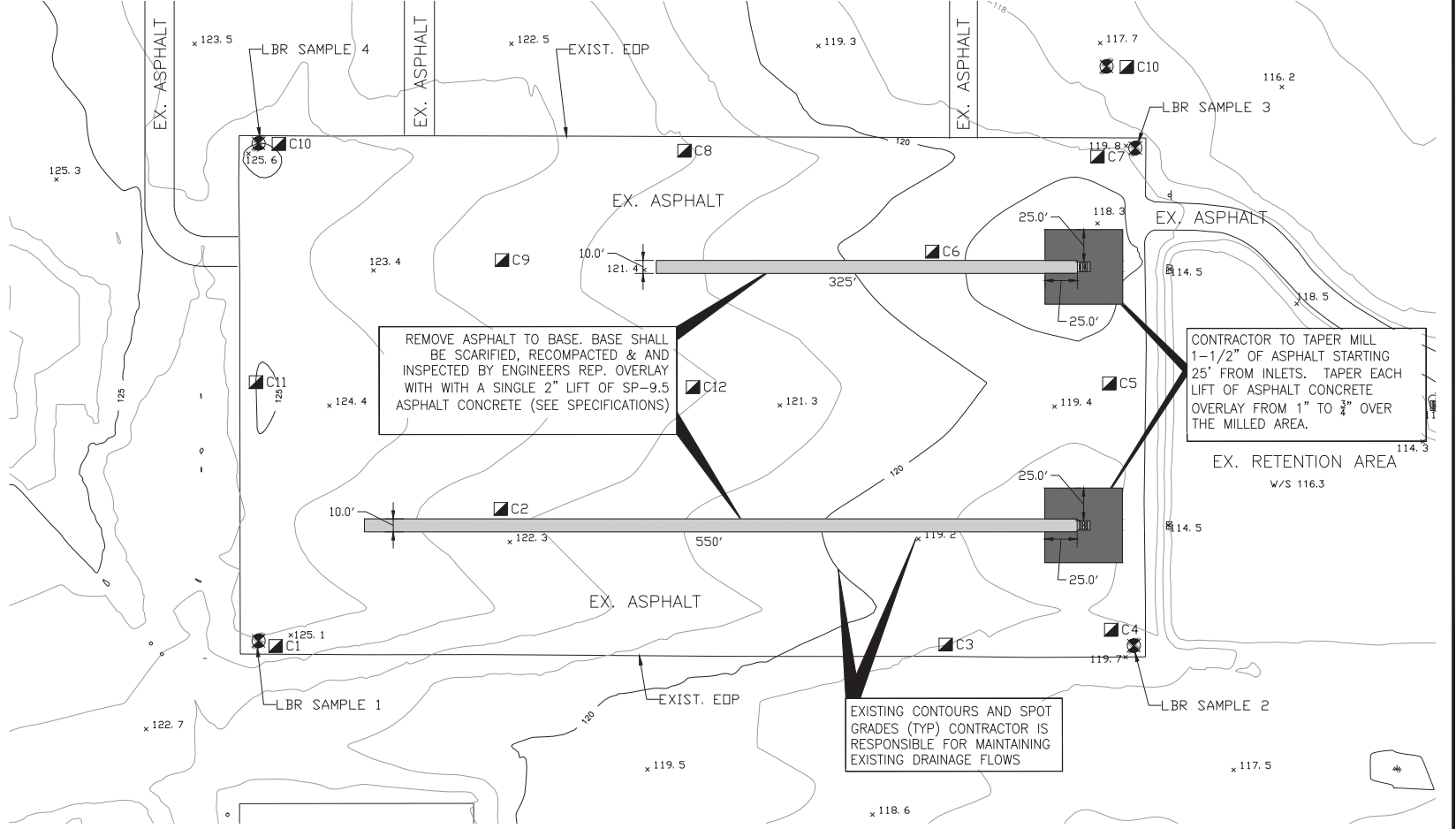
- PROPOSED ASPHALT REMOVAL AND OVERLAY
- PROPOSED ASPHALT MILLING AND OVERLAY
- LBR SAMPLE LOCATION
- C10 BORE LOCATION



EXISTING ASPHALT THICKNESS

CORE NO.	THICKNESS (IN.)
C1	2
C2	2-1/4
C3	2-1/2
C4	2
C5	2-1/4
C6	2-7/8
C7	2-5/8
C8	2-1/4
C9	2-1/4
C10	2-1/4
C11	2-1/4
C12	2-1/2

Thickness provided by FGE, Inc. Test date 3/25/15



HILLSBOROUGH COUNTY SHERIFF'S OFFICE DRIVING PAD RE-SURFACING RE-SURFACING PLAN		JBM & R ENGINEERING, INC. Ralph E. Remmert, P.E. P.E. #39610 C.A.N. #7457	
REFERENCE DRAWINGS NO. DATE REVISION 2 06/23/15 Revised Repair Extents JK BRH RR 1 06/16/15 Issued for Bid JK BRH RR 0 05/07/15 Issued for Review JK RR	PLOT SCALE: AS SHOWN CDD FILE: DrivePad_Cover_01.dwg DATE: 06/23/15 CDD NO: 150	P.O. BOX 1566 Valrico, FL 33595 DISCIPLINE: CML PROJECT:	Tel: 813.598.4643 (C) 813.741.2109 (O) 813.655.0061 (Fax) C-3 REC 2